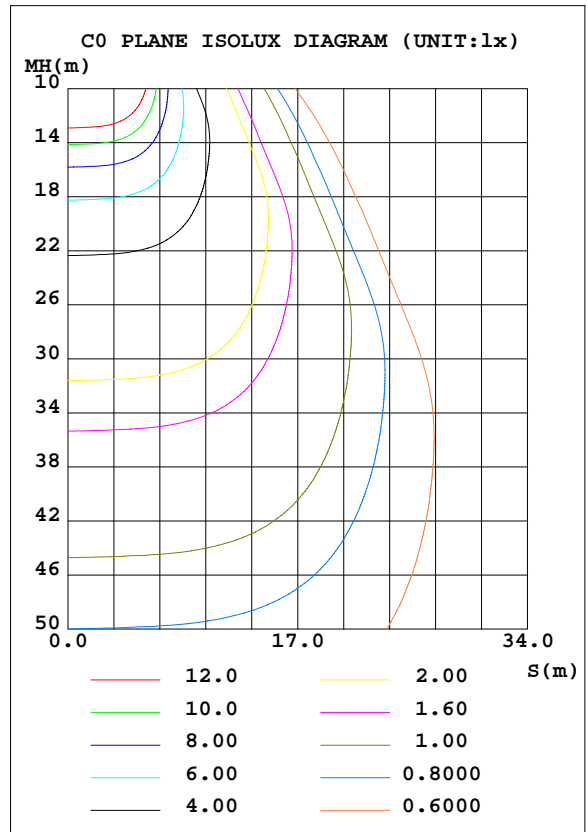
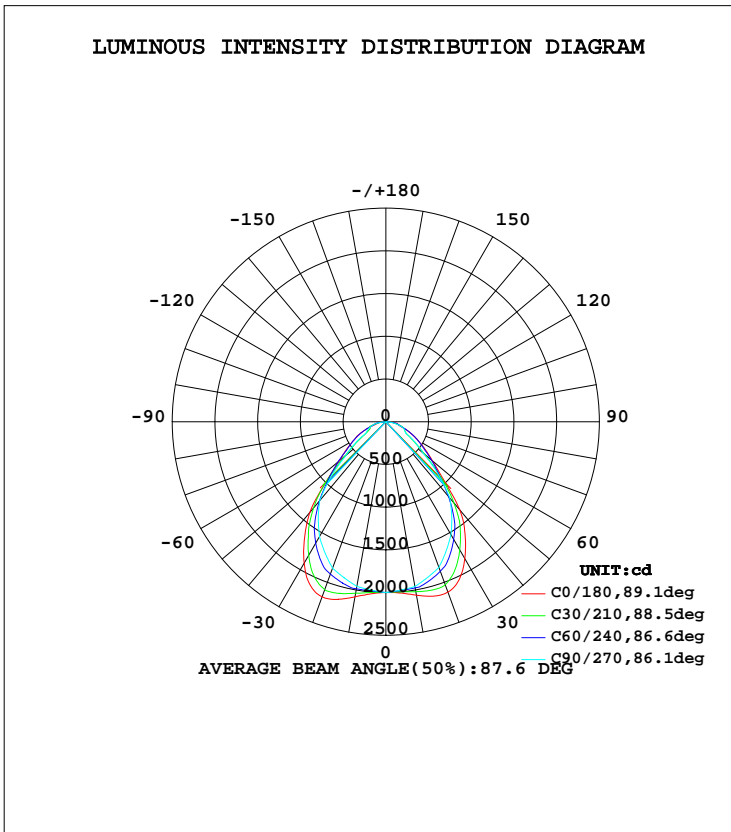


LUMINAIRE PHOTOMETRIC TEST REPORT

Test:U:220.7V I:0.1950A P:40.20W PF:0.9660 Lamp Flux:4213.73x1 lm		
NAME: 6262	TYPE:	WEIGHT:
SPEC.:	DIM.:	SERIAL No.:1
MFR.:	SUR.:	PROTECTION ANGLE:

DATA OF LAMP		PHOTOMETRIC DATA Eff: 104.82 lm/W			
MODEL	6262	I <sub>max</sub> (cd)	2183	S/MH(C0/180)	1.28
NOMINAL POWER(W)	40	LOR(%)	100.0	S/MH(C90/270)	1.16
RATED VOLTAGE(V)	220	TOTAL FLUX(lm)	4213.7	η UP, DN(C0-180)	0.0, 49.5
NOMINAL FLUX(lm)	4213.73	CIE CLASS	DIRECT	η UP, DN(C180-360)	0.0, 50.5
LAMPS INSIDE	1	η up(%)	0.0	CIBSE SHR NOM	1.25
TEST VOLTAGE(V)	220.8	η down(%)	100.0	CIBSE SHR MAX	1.30



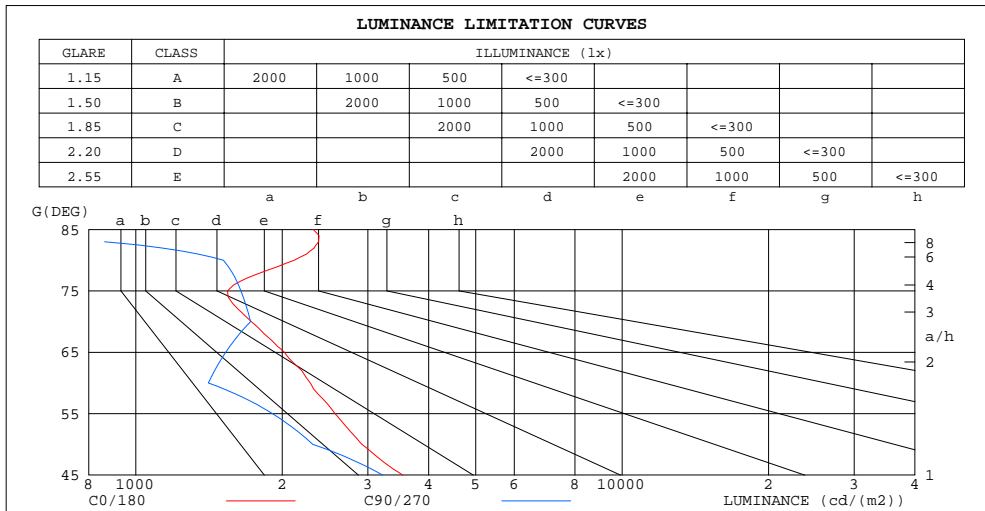
C Range: 0 - 360DEG  
 C Interval: 5.0DEG  
 Test Speed: HIGH  
 Temperature: 25.3DEG  
 Operators:  
 Test Date:

γ Range: 0 - 90DEG  
 γ Interval: 0.5DEG  
 Test System: EVERFINE GO-2000B\_V1 SYSTEM V2.0.283  
 Humidity: 65.0%  
 Test Distance: 10.300m [K=1.0000]  
 Remarks:

ZONAL FLUX DIAGRAM  
AND LUMINANCE LIMITATION CURVES

ZONAL FLUX DIAGRAM:

γ	C0	C45	C90	C135	C180	C225	C270	C315	γ	Φ zone	Φ total	#lum,lamp
5	2013	1990	1979	1997	2023	1997	1978	1991	0- 5	47.70	47.70	1.13,1.13
10	2061	1996	1958	2013	2080	2012	1957	1999	5- 10	143.2	190.9	4.53,4.53
15	2114	1995	1887	2023	2152	2025	1890	2004	10- 15	238.3	429.2	10.2,10.2
20	2122	1933	1815	1975	2181	1984	1824	1955	15- 20	328.2	757.4	18,18
25	2036	1830	1670	1879	2104	1898	1689	1863	20- 25	403.6	1161	27.6,27.6
30	1850	1662	1525	1707	1912	1734	1554	1702	25- 30	451.7	1613	38.3,38.3
35	1618	1453	1344	1487	1660	1518	1379	1497	30- 35	469.8	2082	49.4,49.4
40	1347	1203	1164	1244	1385	1284	1205	1270	35- 40	457.7	2540	60.3,60.3
45	950.9	903.8	864.6	934.0	985.0	974.0	903.4	954.3	40- 45	404.5	2945	69.9,69.9
50	712.6	622.0	564.8	640.8	717.1	658.9	601.9	648.8	45- 50	319.0	3264	77.5,77.5
55	560.0	456.6	416.4	468.8	561.9	467.6	436.1	467.5	50- 55	243.4	3507	83.2,83.2
60	434.0	342.4	267.9	344.6	434.3	327.1	270.3	338.4	55- 60	188.9	3696	87.7,87.7
65	324.5	287.2	245.8	289.3	341.8	278.5	238.3	288.3	60- 65	153.2	3849	91.3,91.3
70	224.6	238.6	223.8	237.8	227.5	233.3	206.4	242.1	65- 70	132.6	3982	94.5,94.5
75	151.8	185.0	161.8	180.9	132.4	182.1	159.3	188.8	70- 75	107.5	4089	97,97
80	139.8	121.5	99.86	117.1	107.6	121.1	112.3	129.0	75- 80	77.54	4167	98.9,98.9
85	76.68	34.07	0	32.01	58.33	34.32	0	37.77	80- 85	41.92	4209	99.9,99.9
90	2.387	0	0	0	3.298	0	0	0	85- 90	5.043	4214	100,100
95									90- 95			
100									95-100			
105									100-105			
110									105-110			
115									110-115			
120									115-120			
125									120-125			
130									125-130			
135									130-135			
140									135-140			
145									140-145			
150									145-150			
155									150-155			
160									155-160			
165									160-165			
170									165-170			
175									170-175			
180									175-180			
DEG	LUMINOUS INTENSITY:cd									UNIT:lm		



LUMINANCE cd/(m2)		
G (DEG)	C0/180	C90/270
85	2315	0
80	2118	1513
75	1544	1645
70	1728	1722
65	2020	1531
60	2284	1410
55	2569	1910
50	2917	2312
45	3539	3218

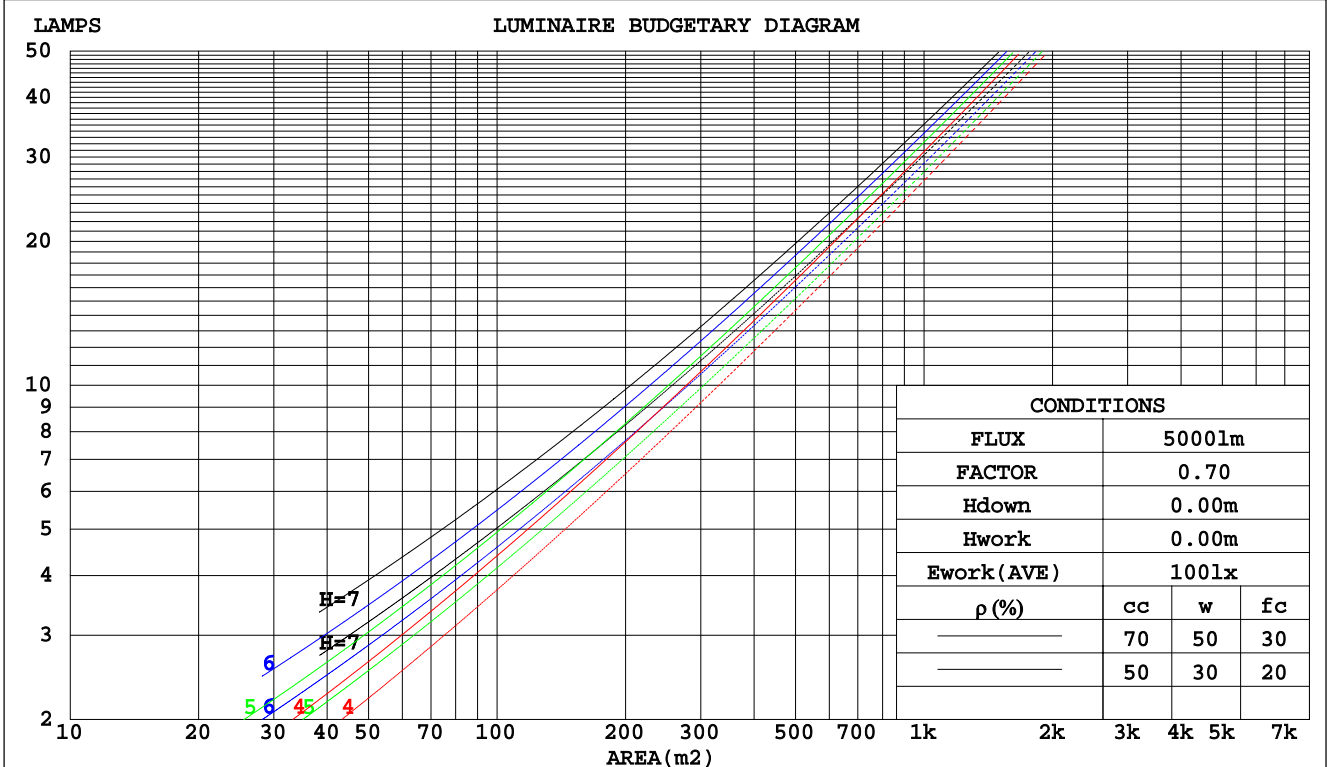
C Range: 0 - 360DEG  
C Interval: 5.0DEG  
Test Speed: HIGH  
Temperature:25.3DEG  
Operators:  
Test Date:

γ Range: 0 - 90DEG  
γ Interval: 0.5DEG  
Test System:EVERFINE GO-2000B\_V1 SYSTEM V2.0.283  
Humidity:65.0%  
Test Distance:10.300m [K=1.0000]  
Remarks:

CU AND LUMINAIRE BUDGETARY ESTIMATE DIAGRAM

Test:U:220.7V I:0.1950A P:40.20W PF:0.9660 Lamp Flux:4213.73x1 lm		
NAME: 6262	TYPE:	WEIGHT:
SPEC.:	DIM.:	SERIAL No.:1
MFR.:	SUR.:	PROTECTION ANGLE:

pcc	80%			70%			50%			30%			10%			0
	50%	30%	10%	50%	30%	10%	50%	30%	10%	50%	30%	10%	50%	30%	10%	
pw																0
pfc	20%			20%			20%			20%			20%			0
RCR	RCR:Room Cavity Ratio															
	Coefficients of Utilization(CU)															
0.0	1.19	1.19	1.19	1.16	1.16	1.16	1.11	1.11	1.11	1.06	1.06	1.06	1.02	1.02	1.02	.00
1.0	1.06	1.03	.99	1.04	1.01	.98	.90	.97	.95	.96	.94	.92	.93	.91	.89	.87
2.0	.95	.89	.84	.93	.88	.83	.90	.85	.81	.86	.83	.79	.83	.80	.78	.76
3.0	.85	.78	.72	.83	.77	.72	.81	.75	.70	.78	.73	.69	.76	.71	.68	.66
4.0	.77	.69	.63	.75	.68	.63	.73	.67	.62	.71	.65	.61	.69	.64	.60	.58
5.0	.70	.62	.56	.68	.61	.55	.66	.60	.55	.65	.59	.54	.63	.58	.54	.52
6.0	.63	.55	.50	.63	.55	.49	.61	.54	.49	.59	.53	.49	.58	.52	.48	.46
7.0	.58	.50	.45	.57	.50	.44	.56	.49	.44	.54	.48	.44	.53	.48	.44	.42
8.0	.53	.46	.40	.53	.45	.40	.52	.45	.40	.50	.44	.40	.49	.44	.40	.38
9.0	.49	.42	.37	.49	.42	.37	.48	.41	.36	.47	.41	.36	.46	.40	.36	.34
10.0	.46	.39	.34	.45	.38	.34	.44	.38	.33	.44	.38	.33	.43	.37	.33	.32



C Range: 0 - 360DEG  
 C Interval: 5.0DEG  
 Test Speed: HIGH  
 Temperature:25.3DEG  
 Operators:  
 Test Date:

γ Range: 0 - 90DEG  
 γ Interval: 0.5DEG  
 Test System:EVERFINE GO-2000B\_V1 SYSTEM V2.0.283  
 Humidity:65.0%  
 Test Distance:10.300m [K=1.0000]  
 Remarks:

WEC AND CCEC

Test:U:220.7V I:0.1950A P:40.20W PF:0.9660 Lamp Flux:4213.73x1 lm		
NAME: 6262	TYPE:	WEIGHT:
SPEC.:	DIM.:	SERIAL No.:1
MFR.:	SUR.:	PROTECTION ANGLE:

ρcc	80%			70%			50%			30%			10%			0
ρw	50%	30%	10%	50%	30%	10%	50%	30%	10%	50%	30%	10%	50%	30%	10%	0
ρfc	20%			20%			20%			20%			20%			0
RCR	RCR:Room Cavity Ratio						Wall Exitance Coefficients(WEC)									
0.0																
1.0	.263	.149	.047	.256	.146	.046	.243	.139	.044	.231	.133	.043	.220	.127	.041	
2.0	.250	.137	.042	.244	.134	.041	.232	.129	.040	.222	.124	.039	.212	.120	.038	
3.0	.234	.124	.037	.228	.122	.037	.219	.118	.036	.209	.115	.035	.201	.111	.034	
4.0	.218	.113	.033	.214	.112	.033	.205	.109	.032	.197	.106	.032	.189	.103	.031	
5.0	.204	.104	.030	.200	.103	.030	.192	.100	.029	.185	.098	.029	.178	.095	.029	
6.0	.191	.096	.027	.188	.095	.027	.181	.093	.027	.174	.091	.027	.168	.089	.026	
7.0	.180	.089	.025	.176	.088	.025	.170	.086	.025	.165	.084	.025	.159	.083	.024	
8.0	.169	.083	.023	.166	.082	.023	.161	.080	.023	.156	.079	.023	.151	.077	.023	
9.0	.160	.077	.022	.157	.077	.022	.152	.075	.021	.148	.074	.021	.143	.073	.021	
10.0	.151	.073	.020	.149	.072	.020	.145	.071	.020	.140	.070	.020	.136	.069	.020	

ρcc	80%			70%			50%			30%			10%			0
ρw	50%	30%	10%	50%	30%	10%	50%	30%	10%	50%	30%	10%	50%	30%	10%	0
ρfc	20%			20%			20%			20%			20%			0
RCR	RCR:Room Cavity Ratio						Ceiling Cavity Exitance Coefficients(CCEC)									
0.0	.190	.190	.190	.163	.163	.163	.111	.111	.111	.064	.064	.064	.020	.020	.020	
1.0	.177	.157	.138	.151	.134	.119	.104	.092	.082	.060	.053	.048	.019	.017	.015	
2.0	.167	.132	.103	.143	.114	.089	.098	.079	.062	.056	.046	.036	.018	.015	.012	
3.0	.158	.114	.079	.135	.098	.069	.093	.068	.048	.054	.040	.028	.017	.013	.009	
4.0	.149	.100	.063	.128	.087	.055	.088	.060	.038	.051	.035	.023	.016	.012	.007	
5.0	.142	.090	.051	.122	.077	.044	.084	.054	.031	.049	.032	.019	.016	.010	.006	
6.0	.135	.081	.042	.116	.070	.037	.080	.049	.026	.046	.029	.016	.015	.009	.005	
7.0	.128	.074	.036	.110	.064	.031	.076	.045	.022	.044	.026	.013	.014	.009	.004	
8.0	.122	.068	.031	.105	.059	.027	.073	.041	.019	.042	.024	.011	.014	.008	.004	
9.0	.117	.063	.027	.100	.055	.023	.070	.038	.017	.041	.023	.010	.013	.007	.003	
10.0	.111	.059	.024	.096	.051	.021	.067	.036	.015	.039	.021	.009	.013	.007	.003	

C Range: 0 - 360DEG  
 C Interval: 5.0DEG  
 Test Speed: HIGH  
 Temperature:25.3DEG  
 Operators:  
 Test Date:

γ Range: 0 - 90DEG  
 γ Interval: 0.5DEG  
 Test System:EVERFINE GO-2000B\_V1 SYSTEM V2.0.283  
 Humidity:65.0%  
 Test Distance:10.300m [K=1.0000]  
 Remarks:

UGR(Unified Glare Rating) Table

Test:U:220.7V I:0.1950A P:40.20W PF:0.9660 Lamp Flux:4213.73x1 lm										
NAME: 6262					TYPE:			WEIGHT:		
SPEC.:					DIM.:			SERIAL No.:1		
MFR.:					SUR.:			PROTECTION ANGLE:		
ceiling/cavity	0.7	0.7	0.5	0.5	0.3	0.7	0.7	0.5	0.5	0.3
walls	0.5	0.3	0.5	0.3	0.3	0.5	0.3	0.5	0.3	0.3
working plane	0.2	0.2	0.2	0.2	0.2	0.2	0.2	0.2	0.2	0.2
Room dimensions	Viewed crosswise					Viewed endwise				
x = 2H y = 2H	14.9	16.2	15.2	16.4	16.6	14.8	16.2	15.1	16.4	16.6
3H	16.1	17.3	16.3	17.5	17.7	15.9	17.1	16.2	17.3	17.6
4H	16.5	17.7	16.8	18.0	18.2	16.4	17.6	16.7	17.8	18.1
6H	17.0	18.1	17.4	18.4	18.7	16.8	17.9	17.1	18.2	18.5
8H	17.3	18.3	17.6	18.6	18.9	16.9	18.0	17.2	18.2	18.5
12H	17.5	18.5	17.8	18.8	19.1	16.9	17.9	17.2	18.2	18.5
4H 2H	15.2	16.4	15.5	16.6	16.9	15.2	16.3	15.5	16.6	16.8
3H	16.6	17.6	16.9	17.9	18.2	16.5	17.5	16.8	17.8	18.1
4H	17.3	18.2	17.6	18.5	18.8	17.2	18.1	17.6	18.4	18.8
6H	17.9	18.8	18.3	19.1	19.5	17.8	18.6	18.2	19.0	19.3
8H	18.2	19.0	18.7	19.4	19.7	17.9	18.7	18.3	19.1	19.4
12H	18.5	19.2	18.9	19.5	19.9	17.9	18.6	18.3	19.0	19.4
8H 4H	17.5	18.3	17.9	18.7	19.0	17.5	18.2	17.9	18.6	19.0
6H	18.3	18.9	18.8	19.4	19.8	18.3	18.9	18.7	19.3	19.7
8H	18.7	19.3	19.2	19.7	20.1	18.5	19.1	19.0	19.5	19.9
12H	19.0	19.5	19.5	19.9	20.4	18.5	19.0	19.0	19.4	19.9
12H 4H	17.6	18.3	18.0	18.6	19.0	17.5	18.2	17.9	18.6	19.0
6H	18.4	19.0	18.9	19.4	19.8	18.4	18.9	18.8	19.3	19.8
8H	18.8	19.3	19.3	19.7	20.2	18.6	19.1	19.1	19.5	20.0
Variations with the observer position at spacings:										
S = 1.0H	+ 0.4 / - 0.4					+ 0.3 / - 0.4				
1.5H	+ 0.4 / - 0.4					+ 0.2 / - 0.7				
2.0H	+ 0.8 / - 0.7					+ 0.6 / - 1.2				

CIE Pub.117 Corrected 4214 lm Total Lamp Luminous Flux.(8log(F/F0) = 5.0)

C Range: 0 - 360DEG  
 C Interval: 5.0DEG  
 Test Speed: HIGH  
 Temperature:25.3DEG  
 Operators:  
 Test Date:

γ Range: 0 - 90DEG  
 γ Interval: 0.5DEG  
 Test System:EVERFINE GO-2000B\_V1 SYSTEM V2.0.283  
 Humidity:65.0%  
 Test Distance:10.300m [K=1.0000]  
 Remarks:

UTILIZATION FACTORS TABLE

Test:U:220.7V I:0.1950A P:40.20W PF:0.9660 Lamp Flux:4213.73x1 lm		
NAME: 6262	TYPE:	WEIGHT:
SPEC.:	DIM.:	SERIAL No.:1
MFR.:	SUR.:	PROTECTION ANGLE:

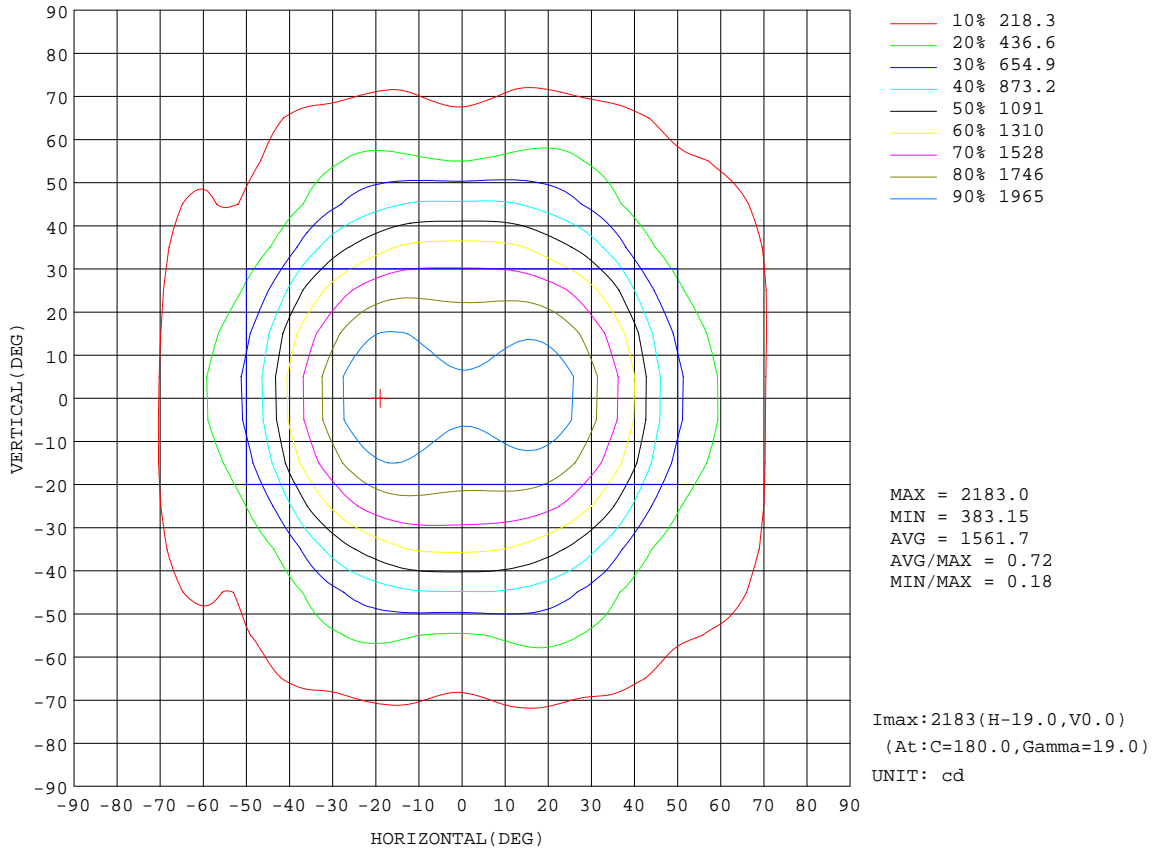
REFLECTANCE										
Ceiling	0.8	0.8	0.8	0.7	0.7	0.7	0.5	0.5	0.5	0
Walls	0.7	0.5	0.3	0.7	0.5	0.3	0.7	0.5	0.3	0
Working plane	0.2	0.2	0.2	0.2	0.2	0.2	0.2	0.2	0.2	0
ROOM INDEX	UTILIZATION FACTORS(PERCENT) $k(RI) \times RCR = 5$									
k = 0.60	67	57	51	66	57	51	65	56	51	45
0.80	76	67	61	76	66	60	74	66	60	54
1.00	84	75	69	83	74	68	81	75	68	62
1.25	90	82	76	89	81	75	86	80	74	68
1.50	94	86	81	93	86	80	90	84	79	73
2.00	100	93	88	98	92	87	95	90	85	79
2.50	103	97	92	101	95	91	97	93	89	81
3.00	106	100	96	104	99	94	100	96	92	85
4.00	109	104	100	107	102	99	103	99	96	88
5.00	111	107	104	108	105	102	104	101	99	90
ROOM INDEX	UF(total)									Direct
According to DIN EN 13032-2 2004			Suspended				SHRNOM = 1.25			

C Range: 0 - 360DEG  
 C Interval: 5.0DEG  
 Test Speed: HIGH  
 Temperature:25.3DEG  
 Operators:  
 Test Date:

$\gamma$  Range: 0 - 90DEG  
 $\gamma$  Interval: 0.5DEG  
 Test System:EVERFINE GO-2000B\_V1 SYSTEM V2.0.283  
 Humidity:65.0%  
 Test Distance:10.300m [K=1.0000]  
 Remarks:

ISOCANDELA DIAGRAM

Test:U:220.7V I:0.1950A P:40.20W PF:0.9660 Lamp Flux:4213.73x1 lm		
NAME: 6262	TYPE:	WEIGHT:
SPEC.:	DIM.:	SERIAL No.:1
MFR.:	SUR.:	PROTECTION ANGLE:

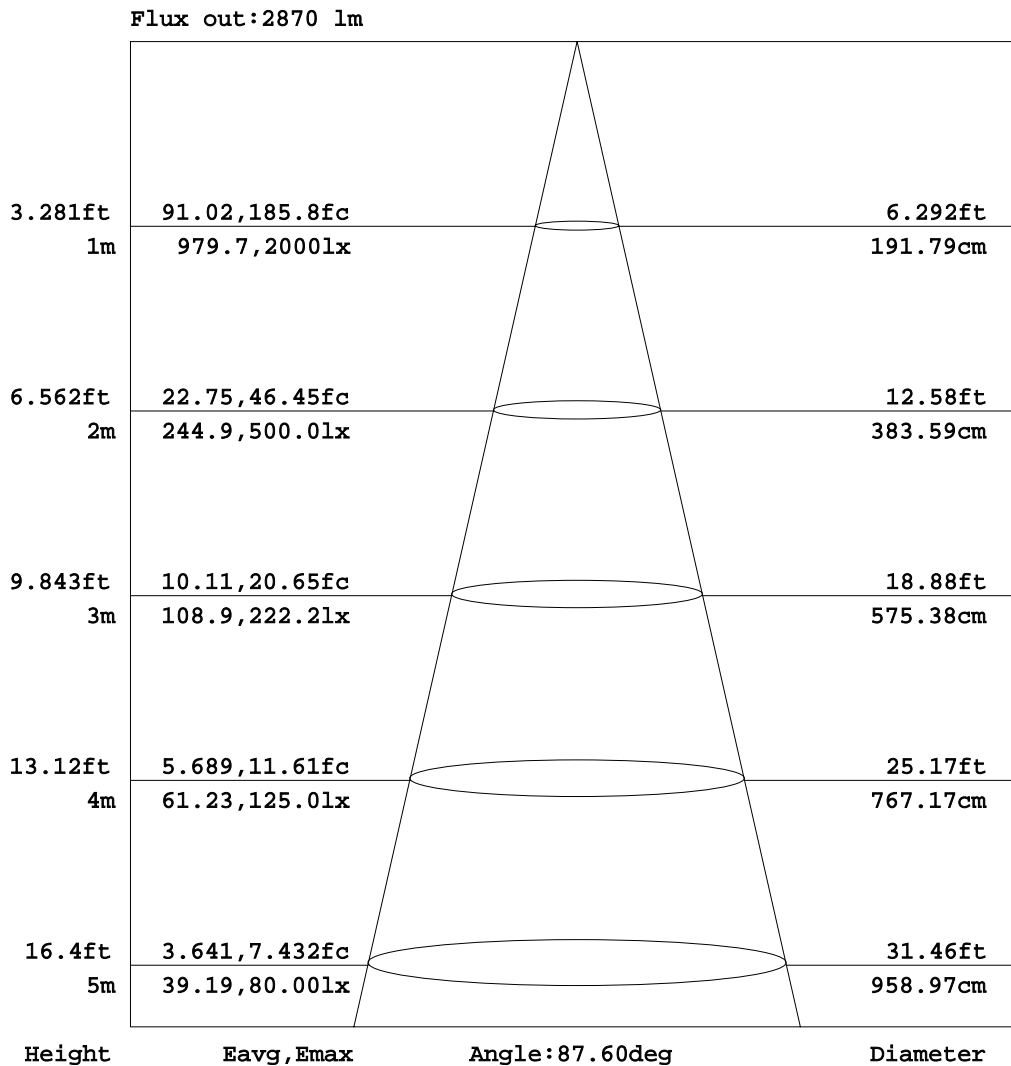


C Range: 0 - 360DEG  
 C Interval: 5.0DEG  
 Test Speed: HIGH  
 Temperature:25.3DEG  
 Operators:  
 Test Date:

γ Range: 0 - 90DEG  
 γ Interval: 0.5DEG  
 Test System:EVERFINE GO-2000B\_V1 SYSTEM V2.0.283  
 Humidity:65.0%  
 Test Distance:10.300m [K=1.0000]  
 Remarks:

AAI Figure

Test:U:220.7V I:0.1950A P:40.20W PF:0.9660 Lamp Flux:4213.73x1 lm		
NAME: 6262	TYPE:	WEIGHT:
SPEC.:	DIM.:	SERIAL No.:1
MFR.:	SUR.:	PROTECTION ANGLE:



Note:The Curves indicate the illuminated area and the average illumination when the luminaire is at different distance.

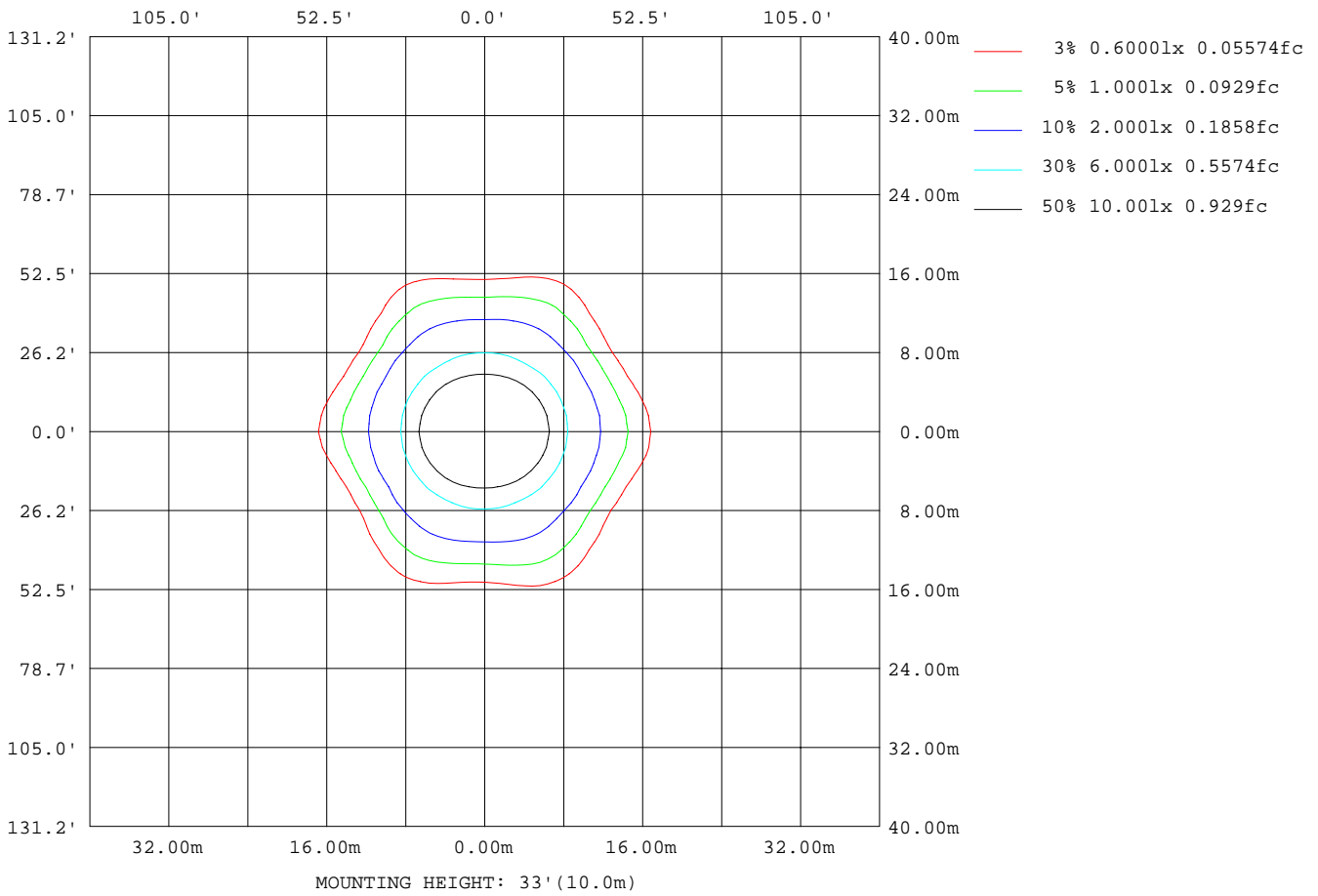
C Range: 0 - 360DEG  
 C Interval: 5.0DEG  
 Test Speed: HIGH  
 Temperature:25.3DEG  
 Operators:  
 Test Date:

γ Range: 0 - 90DEG  
 γ Interval: 0.5DEG  
 Test System:EVERFINE GO-2000B\_V1 SYSTEM V2.0.283  
 Humidity:65.0%  
 Test Distance:10.300m [K=1.0000]  
 Remarks:



ISOLUX DIAGRAM

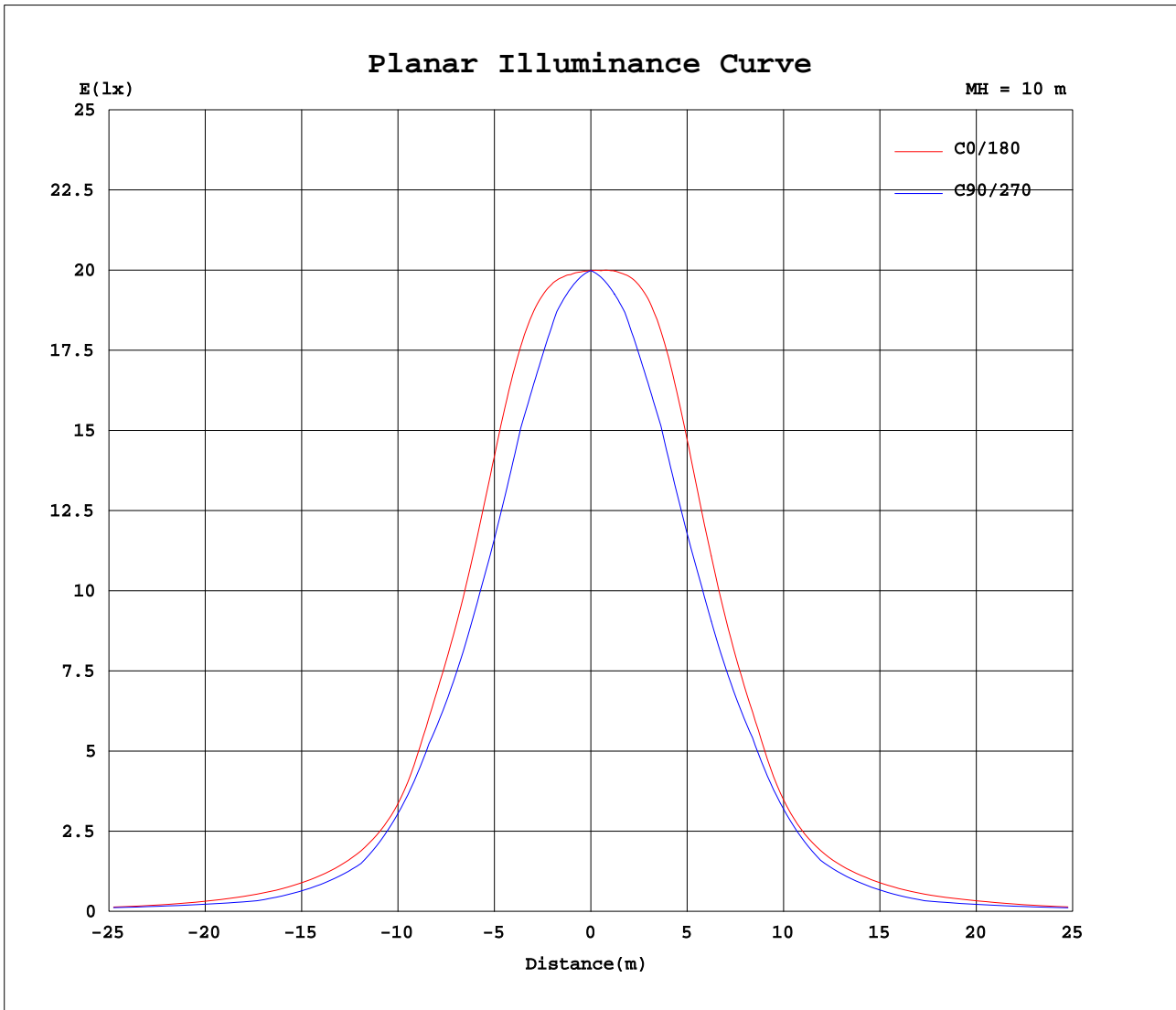
Test:U:220.7V I:0.1950A P:40.20W PF:0.9660 Lamp Flux:4213.73x1 lm		
NAME: 6262	TYPE:	WEIGHT:
SPEC.:	DIM.:	SERIAL No.:1
MFR.:	SUR.:	PROTECTION ANGLE:



C Range: 0 - 360DEG  
 C Interval: 5.0DEG  
 Test Speed: HIGH  
 Temperature: 25.3DEG  
 Operators:  
 Test Date:

γ Range: 0 - 90DEG  
 γ Interval: 0.5DEG  
 Test System: EVERFINE GO-2000B\_V1 SYSTEM V2.0.283  
 Humidity: 65.0%  
 Test Distance: 10.300m [K=1.0000]  
 Remarks:

Planar Illuminance Curve



C Range: 0 - 360DEG  
 C Interval: 5.0DEG  
 Test Speed: HIGH  
 Temperature: 25.3DEG  
 Operators:  
 Test Date:

$\gamma$  Range: 0 - 90DEG  
 $\gamma$  Interval: 0.5DEG  
 Test System: EVERFINE GO-2000B\_V1 SYSTEM V2.0.283  
 Humidity: 65.0%  
 Test Distance: 10.300m [K=1.0000]  
 Remarks:

Photometric Data Table [cd]

G/C	0.0	5.0	10.0	15.0	20.0	25.0	30.0	35.0	40.0	45.0
0.0	1999	1999	1999	1999	1999	1999	1999	1999	1999	1999
2.5	2001	2000	1999	1998	1997	1996	1995	1994	1993	1992
5.0	2013	2011	2009	2007	2004	2001	1998	1996	1993	1990
7.5	2034	2031	2027	2023	2018	2013	2007	2001	1996	1991
10.0	2061	2056	2050	2043	2035	2028	2019	2011	2003	1996
12.5	2089	2081	2073	2063	2053	2043	2033	2022	2011	2000
15.0	2114	2103	2092	2079	2067	2054	2042	2029	2017	1995
17.5	2127	2113	2099	2085	2071	2058	2046	2027	1997	1968
20.0	2122	2104	2088	2073	2060	2048	2031	1995	1963	1933
22.5	2093	2072	2054	2039	2028	2018	1982	1947	1917	1887
25.0	2036	2011	1992	1979	1972	1949	1914	1883	1854	1830
27.5	1951	1926	1910	1900	1895	1859	1828	1802	1779	1757
30.0	1850	1824	1809	1804	1789	1758	1731	1708	1688	1662
32.5	1737	1711	1698	1696	1672	1648	1626	1608	1581	1560
35.0	1618	1595	1585	1583	1551	1532	1519	1489	1466	1453
37.5	1496	1471	1463	1453	1421	1406	1391	1359	1341	1336
40.0	1347	1318	1314	1299	1275	1267	1240	1218	1207	1203
42.5	1142	1121	1129	1116	1109	1100	1078	1067	1061	1052
45.0	950.9	936.6	946.6	930.2	930.2	918.4	905.5	907.5	909.3	903.8
47.5	818.9	804.7	805.9	781.9	775.8	747.5	732.0	748.9	758.2	755.9
50.0	712.6	699.0	686.9	658.7	638.4	609.6	589.8	606.4	614.1	622.0
52.5	632.6	614.2	589.8	551.6	526.4	496.2	487.6	489.1	491.6	533.1
55.0	560.0	541.0	508.8	467.5	434.8	410.1	401.5	398.2	421.8	456.6
57.5	493.4	477.5	444.8	402.6	365.1	345.6	333.3	337.6	362.6	392.7
60.0	434.0	422.9	396.6	359.2	317.0	296.9	281.9	293.5	313.0	342.4
62.5	379.2	376.2	358.7	329.2	294.5	263.8	257.9	260.8	275.8	312.4
65.0	324.5	327.9	326.0	308.4	280.9	253.5	244.6	239.4	258.8	287.2
67.5	271.8	278.7	289.4	290.3	271.5	249.0	237.1	232.4	246.6	266.6
70.0	224.6	233.9	251.8	262.9	256.1	240.8	225.0	224.9	235.1	238.6
72.5	183.1	193.1	217.0	228.8	228.7	216.9	206.8	207.6	207.8	211.2
75.0	151.8	162.7	181.1	190.1	191.5	183.6	176.7	172.7	179.4	185.0
77.5	143.5	147.9	151.6	154.4	150.4	145.6	136.8	135.6	148.7	154.1
80.0	139.8	132.0	125.1	122.3	115.9	109.4	99.22	103.9	115.4	121.5
82.5	116.5	95.11	92.61	90.80	86.41	79.85	74.14	76.39	83.31	88.83
85.0	76.68	57.14	57.90	57.18	54.50	52.08	49.08	42.59	38.48	34.07
87.5	29.57	28.82	27.83	24.83	15.66	7.767	0	0	0	0
90.0	2.387	0	0	0	0	0	0	0	0	0
G/C	50.0	55.0	60.0	65.0	70.0	75.0	80.0	85.0	90.0	95.0
0.0	1999	1999	1999	1999	1999	1999	1999	1999	1999	1999
2.5	1992	1991	1990	1990	1989	1989	1989	1989	1989	1989
5.0	1988	1986	1983	1982	1980	1979	1979	1979	1979	1979
7.5	1987	1982	1978	1975	1972	1970	1969	1969	1969	1970
10.0	1988	1981	1975	1969	1965	1962	1959	1959	1958	1960
12.5	1990	1978	1962	1949	1938	1931	1925	1923	1923	1925
15.0	1971	1951	1933	1918	1905	1895	1890	1887	1887	1890
17.5	1943	1920	1900	1883	1871	1860	1853	1851	1851	1855
20.0	1907	1884	1863	1847	1833	1823	1816	1815	1815	1819
22.5	1862	1841	1822	1799	1777	1761	1748	1743	1743	1748
25.0	1806	1779	1751	1725	1704	1688	1676	1670	1670	1675
27.5	1727	1698	1672	1649	1629	1614	1603	1598	1597	1602
30.0	1636	1611	1589	1568	1552	1539	1530	1525	1525	1529
32.5	1540	1520	1501	1485	1465	1450	1441	1436	1435	1440
35.0	1439	1424	1396	1374	1362	1353	1348	1345	1344	1350
37.5	1327	1296	1271	1258	1254	1253	1255	1254	1254	1259
40.0	1183	1158	1141	1138	1142	1151	1161	1163	1164	1168
42.5	1037	1015	1007	1012	1024	1030	1028	1019	1014	1021
45.0	888.2	872.4	884.2	898.3	903.5	899.5	888.5	872.9	864.6	870.5
47.5	748.6	772.3	787.6	794.8	789.1	771.8	750.0	727.4	714.7	720.4
50.0	659.9	684.3	697.9	698.0	680.0	646.6	613.2	582.4	564.8	570.4
52.5	571.5	599.4	614.5	606.6	588.0	559.1	531.3	505.5	490.6	493.5
55.0	491.5	518.5	542.7	544.5	527.8	495.2	461.0	431.7	416.4	419.9
57.5	420.7	459.4	484.7	486.1	468.3	432.0	391.2	358.0	342.1	346.4
60.0	381.9	411.4	429.0	428.5	409.4	369.5	322.1	284.3	267.9	272.9
62.5	348.5	369.3	376.6	372.5	360.2	331.8	297.3	269.2	256.8	260.2
65.0	319.3	331.3	328.2	328.6	324.5	305.5	279.5	256.3	245.8	249.8
67.5	285.9	288.5	281.2	283.6	287.2	278.0	260.9	243.2	234.8	239.3
70.0	249.6	247.6	234.8	237.8	248.7	249.2	241.7	229.9	223.8	228.9
72.5	216.2	208.4	189.4	197.9	214.5	218.0	211.8	199.9	192.8	198.1
75.0	185.5	179.1	168.4	173.2	184.6	186.5	180.5	169.3	161.8	166.8
77.5	156.0	154.1	147.5	149.4	155.3	155.0	149.2	138.8	130.8	135.5
80.0	126.2	128.2	126.3	126.3	126.4	123.6	117.8	108.2	99.86	104.1
82.5	93.66	90.26	83.76	76.97	71.15	65.94	60.69	54.52	49.93	52.43
85.0	29.70	23.88	17.65	12.11	7.631	4.190	1.782	0.4100	0	0.3943

C Range: 0 - 360DEG  
 C Interval: 5.0DEG  
 Test Speed: HIGH  
 Temperature: 25.3DEG  
 Operators:  
 Test Date:

γ Range: 0 - 90DEG  
 γ Interval: 0.5DEG  
 Test System: EVERFINE GO-2000B\_V1 SYSTEM V2.0.283  
 Humidity: 65.0%  
 Test Distance: 10.300m [K=1.0000]  
 Remarks:

Photometric Data Table [cd]

87.5	0	0	0	0	0	0	0	0	0	0
90.0	0	0	0	0	0	0	0	0	0	0
G/C	100.0	105.0	110.0	115.0	120.0	125.0	130.0	135.0	140.0	145.0
0.0	1999	1999	1999	1999	1999	1999	1999	1999	1999	1999
2.5	1990	1990	1991	1991	1992	1993	1994	1996	1997	1998
5.0	1980	1982	1984	1986	1988	1990	1993	1997	2000	2004
7.5	1972	1975	1978	1981	1986	1992	1998	2004	2010	2015
10.0	1964	1968	1973	1979	1988	1996	2004	2013	2021	2030
12.5	1931	1938	1949	1963	1979	1996	2011	2023	2035	2047
15.0	1896	1905	1919	1935	1952	1974	1997	2023	2048	2063
17.5	1861	1872	1887	1903	1924	1947	1973	2003	2035	2070
20.0	1826	1838	1852	1870	1890	1915	1943	1975	2008	2045
22.5	1758	1775	1797	1825	1853	1877	1904	1934	1967	2002
25.0	1686	1703	1725	1751	1783	1819	1853	1879	1907	1939
27.5	1613	1629	1649	1674	1704	1736	1771	1807	1832	1858
30.0	1539	1553	1571	1593	1619	1647	1676	1707	1739	1758
32.5	1450	1466	1485	1508	1528	1550	1574	1600	1623	1652
35.0	1359	1372	1385	1402	1421	1448	1467	1487	1507	1528
37.5	1267	1276	1283	1288	1300	1319	1353	1371	1382	1396
40.0	1173	1178	1177	1167	1171	1184	1211	1244	1245	1252
42.5	1035	1051	1059	1044	1035	1045	1067	1087	1095	1096
45.0	887.3	907.8	922.0	920.2	905.3	898.6	920.4	934.0	935.1	929.3
47.5	741.0	766.9	789.0	803.0	803.5	791.5	770.7	785.3	779.7	761.2
50.0	595.3	628.6	662.4	693.1	707.1	700.3	677.0	640.8	632.8	608.8
52.5	511.1	534.9	559.9	590.5	615.3	611.3	590.5	549.8	500.5	489.3
55.0	440.0	469.9	501.6	529.4	540.0	524.8	506.1	468.8	427.0	391.3
57.5	369.3	406.1	444.1	472.4	483.3	464.6	430.2	399.4	363.6	327.6
60.0	298.9	343.6	387.0	415.9	428.0	413.9	386.3	344.6	308.7	280.9
62.5	278.4	310.4	340.7	361.2	375.0	367.8	349.4	314.1	269.4	243.1
65.0	266.3	290.9	309.9	320.4	324.7	325.3	318.3	289.3	250.9	219.5
67.5	253.8	269.9	277.2	277.6	274.8	278.7	283.9	269.0	238.9	217.1
70.0	240.8	247.7	243.1	232.8	225.1	234.2	245.7	237.8	229.2	216.1
72.5	210.5	216.4	209.4	192.1	176.1	191.8	209.9	208.1	203.6	203.7
75.0	177.8	182.3	177.1	164.9	154.3	162.8	177.3	180.9	176.7	169.5
77.5	145.0	148.3	145.3	138.7	133.3	139.5	148.3	149.9	146.9	132.9
80.0	112.1	114.4	114.0	113.2	112.5	115.1	118.7	117.1	112.2	99.69
82.5	57.62	60.64	63.41	67.88	73.97	80.25	86.62	83.85	78.21	70.23
85.0	1.692	3.851	6.797	10.68	15.59	21.26	27.50	32.01	35.19	37.33
87.5	0	0	0	0	0	0	0	0	0	0
90.0	0	0	0	0	0	0	0	0	0	0
G/C	150.0	155.0	160.0	165.0	170.0	175.0	180.0	185.0	190.0	195.0
0.0	1999	1999	1999	1999	1999	1999	1999	1999	1999	1999
2.5	1999	2000	2001	2002	2003	2004	2005	2004	2003	2002
5.0	2007	2010	2013	2016	2019	2021	2023	2021	2018	2016
7.5	2021	2027	2033	2037	2042	2045	2048	2045	2041	2037
10.0	2039	2047	2055	2062	2069	2075	2080	2075	2069	2063
12.5	2059	2071	2082	2093	2102	2110	2118	2111	2103	2094
15.0	2077	2091	2105	2118	2130	2141	2152	2142	2131	2120
17.5	2089	2105	2120	2135	2149	2162	2176	2164	2151	2138
20.0	2084	2103	2117	2131	2147	2163	2181	2165	2150	2136
22.5	2040	2080	2091	2103	2119	2137	2158	2139	2124	2111
25.0	1974	2013	2038	2046	2059	2078	2104	2083	2067	2057
27.5	1886	1919	1957	1963	1975	1994	2021	1998	1984	1975
30.0	1781	1811	1844	1860	1867	1884	1912	1889	1877	1874
32.5	1670	1691	1721	1746	1748	1764	1792	1769	1759	1761
35.0	1555	1573	1592	1622	1624	1635	1660	1641	1635	1638
37.5	1428	1448	1461	1488	1499	1505	1528	1511	1511	1508
40.0	1280	1311	1314	1339	1357	1358	1385	1368	1374	1363
42.5	1111	1134	1146	1153	1165	1158	1186	1172	1192	1190
45.0	922.7	941.0	947.1	944.6	961.1	960.5	985.0	978.1	996.5	988.3
47.5	733.6	751.1	779.1	787.7	807.5	811.9	832.7	825.8	835.6	823.9
50.0	584.2	604.2	638.8	657.8	677.7	694.7	717.1	709.0	706.1	685.5
52.5	478.2	482.3	515.4	541.3	572.7	601.6	630.5	617.4	597.8	569.9
55.0	389.3	388.2	414.1	445.7	486.6	526.8	561.9	543.3	512.5	474.8
57.5	314.7	321.1	337.8	373.9	418.1	462.2	494.6	474.3	441.8	400.8
60.0	261.3	268.5	284.4	323.7	368.5	408.7	434.3	416.7	386.7	347.9
62.5	233.7	230.9	256.1	293.3	335.3	370.3	391.0	374.2	345.8	311.5
65.0	217.3	219.2	244.0	275.9	312.4	333.4	341.8	331.2	315.2	286.2
67.5	211.0	221.0	239.8	267.0	287.0	287.3	283.7	280.2	281.7	268.8
70.0	207.4	223.1	234.8	251.2	251.7	237.6	227.5	229.0	242.5	247.2
72.5	197.5	204.0	214.6	223.0	211.7	190.9	176.5	181.1	201.3	219.0
75.0	169.9	172.0	179.2	179.7	168.1	148.4	132.4	140.2	163.6	179.6
77.5	127.6	133.9	138.2	137.1	129.4	119.0	112.5	117.8	133.9	143.6

C Range: 0 - 360DEG  
 C Interval: 5.0DEG  
 Test Speed: HIGH  
 Temperature: 25.3DEG  
 Operators:  
 Test Date:

γ Range: 0 - 90DEG  
 γ Interval: 0.5DEG  
 Test System: EVERFINE GO-2000B\_V1 SYSTEM V2.0.283  
 Humidity: 65.0%  
 Test Distance: 10.300m [K=1.0000]  
 Remarks:

Photometric Data Table [cd]

80.0	88.04	96.82	103.5	104.8	102.8	102.5	107.6	108.9	113.9	114.6
82.5	64.64	67.83	73.71	75.52	72.23	71.73	90.36	89.14	89.29	87.60
85.0	41.80	42.95	44.45	44.47	41.80	38.94	58.33	57.44	57.11	55.63
87.5	0	6.298	11.90	16.22	16.76	17.72	18.61	22.42	22.80	21.13
90.0	0	0	0	0	0	0	3.298	0	0	0
G/C	200.0	205.0	210.0	215.0	220.0	225.0	230.0	235.0	240.0	245.0
0.0	1999	1999	1999	1999	1999	1999	1999	1999	1999	1999
2.5	2001	2000	1999	1998	1996	1995	1994	1993	1992	1991
5.0	2013	2010	2007	2003	2000	1997	1993	1990	1988	1985
7.5	2032	2027	2021	2015	2009	2003	1997	1991	1986	1981
10.0	2055	2047	2038	2030	2021	2012	2003	1994	1986	1978
12.5	2083	2072	2060	2048	2035	2022	2011	1996	1978	1963
15.0	2108	2094	2080	2066	2050	2025	1999	1975	1955	1936
17.5	2123	2109	2093	2075	2041	2009	1979	1952	1928	1909
20.0	2123	2110	2092	2053	2016	1984	1952	1924	1899	1877
22.5	2101	2091	2052	2015	1980	1945	1917	1889	1864	1835
25.0	2051	2028	1991	1957	1927	1898	1869	1835	1798	1767
27.5	1974	1940	1909	1883	1856	1832	1793	1755	1723	1694
30.0	1861	1833	1807	1787	1770	1734	1702	1670	1642	1616
32.5	1740	1713	1695	1681	1655	1631	1602	1577	1554	1534
35.0	1612	1594	1580	1558	1539	1518	1497	1477	1452	1433
37.5	1487	1474	1456	1435	1421	1405	1384	1352	1335	1326
40.0	1350	1353	1317	1296	1298	1284	1244	1219	1210	1213
42.5	1190	1185	1164	1148	1154	1131	1100	1082	1078	1095
45.0	1003	996.0	984.5	989.7	982.7	974.0	952.5	937.5	948.1	963.2
47.5	827.7	803.6	793.4	816.7	817.6	814.0	798.0	818.5	835.0	836.7
50.0	673.7	645.6	628.6	650.3	659.4	658.9	693.0	719.1	729.3	717.7
52.5	544.2	516.2	508.0	511.6	511.2	558.2	595.5	620.3	629.0	606.3
55.0	441.4	415.2	409.6	400.3	428.4	467.6	500.7	523.7	547.5	542.0
57.5	361.4	340.5	326.7	331.1	357.8	387.9	416.5	461.9	490.0	483.4
60.0	304.4	281.0	266.2	279.4	297.5	327.1	376.4	413.3	435.4	425.6
62.5	270.9	237.7	232.4	235.4	256.4	300.0	342.6	370.9	383.6	370.0
65.0	251.5	220.0	210.7	207.2	240.4	278.5	314.3	331.6	332.9	327.9
67.5	240.5	217.3	200.4	206.3	229.5	261.7	281.4	282.8	281.3	283.6
70.0	235.3	218.5	202.1	208.9	221.0	233.3	244.2	236.9	229.8	237.1
72.5	217.6	205.8	198.4	201.9	198.7	206.3	210.2	193.8	179.0	194.9
75.0	185.7	179.5	175.1	170.9	175.5	182.1	179.5	165.5	156.9	166.4
77.5	146.2	142.7	132.2	136.0	148.6	152.8	151.4	143.4	135.6	139.2
80.0	112.0	103.1	91.43	103.5	115.2	121.1	122.9	120.3	114.7	112.9
82.5	81.73	73.05	68.38	74.44	82.66	89.24	91.48	85.25	75.66	67.55
85.0	51.93	48.64	46.00	40.52	37.93	34.32	29.05	22.59	15.97	10.63
87.5	15.01	7.371	0	0	0	0	0	0	0	0
90.0	0	0	0	0	0	0	0	0	0	0
G/C	250.0	255.0	260.0	265.0	270.0	275.0	280.0	285.0	290.0	295.0
0.0	1999	1999	1999	1999	1999	1999	1999	1999	1999	1999
2.5	1990	1990	1989	1989	1988	1988	1989	1989	1989	1989
5.0	1983	1981	1980	1979	1978	1978	1978	1979	1980	1982
7.5	1977	1974	1971	1969	1967	1968	1969	1970	1973	1976
10.0	1972	1967	1963	1959	1957	1957	1959	1963	1966	1971
12.5	1950	1940	1932	1927	1924	1925	1928	1934	1942	1952
15.0	1921	1908	1900	1894	1890	1892	1896	1903	1912	1926
17.5	1891	1877	1867	1861	1857	1859	1863	1870	1881	1896
20.0	1860	1844	1834	1828	1824	1825	1830	1837	1849	1865
22.5	1808	1786	1770	1761	1757	1759	1766	1779	1798	1821
25.0	1739	1719	1703	1694	1689	1691	1698	1711	1730	1752
27.5	1668	1649	1634	1626	1622	1623	1630	1641	1658	1680
30.0	1595	1578	1565	1557	1554	1555	1561	1571	1585	1603
32.5	1512	1493	1479	1470	1467	1468	1476	1488	1503	1522
35.0	1417	1402	1390	1382	1379	1381	1387	1396	1407	1420
37.5	1319	1309	1301	1294	1292	1294	1299	1304	1309	1311
40.0	1217	1215	1210	1206	1205	1206	1209	1210	1206	1194
42.5	1102	1092	1074	1059	1054	1061	1075	1087	1090	1071
45.0	963.4	949.7	929.1	910.2	903.4	913.2	931.3	947.6	954.6	942.8
47.5	826.9	809.2	784.6	761.3	752.7	765.8	788.7	809.9	822.7	823.1
50.0	694.3	669.6	640.7	612.7	601.9	618.8	646.9	673.3	695.5	713.6
52.5	584.1	568.5	547.6	526.7	519.0	532.9	555.0	575.7	590.8	611.9
55.0	518.9	492.9	465.1	443.5	436.1	449.6	474.0	504.0	529.3	550.7
57.5	455.6	418.9	383.0	360.2	353.2	366.2	393.8	434.3	469.5	494.5
60.0	394.0	346.7	301.3	276.8	270.3	282.8	314.2	366.6	411.2	439.0
62.5	346.0	310.4	276.2	258.9	254.3	264.3	287.6	328.2	362.7	385.0
65.0	315.8	290.9	261.0	243.6	238.3	248.2	269.8	303.2	326.5	338.0
67.5	283.5	270.3	245.6	228.3	222.3	232.1	251.5	276.8	288.2	289.6
70.0	249.4	248.5	229.9	213.0	206.4	215.9	232.7	249.0	248.3	240.0

C Range: 0 - 360DEG  
 C Interval: 5.0DEG  
 Test Speed: HIGH  
 Temperature: 25.3DEG  
 Operators:  
 Test Date:

γ Range: 0 - 90DEG  
 γ Interval: 0.5DEG  
 Test System: EVERFINE GO-2000B\_V1 SYSTEM V2.0.283  
 Humidity: 65.0%  
 Test Distance: 10.300m [K=1.0000]  
 Remarks:

Photometric Data Table [cd]

72.5	214.8	218.6	204.1	189.1	182.8	192.0	207.1	219.3	213.9	197.5
75.0	180.7	185.9	176.9	164.9	159.3	167.9	180.5	189.2	184.8	173.5
77.5	147.2	152.9	149.3	140.7	135.8	143.7	153.6	159.0	156.3	150.4
80.0	114.1	119.7	121.5	116.4	112.3	119.5	126.5	128.9	128.3	127.9
82.5	63.18	63.53	62.69	58.68	56.14	60.27	65.34	68.92	72.37	78.25
85.0	6.766	4.032	1.840	0.4412	0	0.4533	1.918	4.377	7.758	12.32
87.5	0	0	0	0	0	0	0	0	0	0
90.0	0	0	0	0	0	0	0	0	0	0
G/C	300.0	305.0	310.0	315.0	320.0	325.0	330.0	335.0	340.0	345.0
0.0	1999	1999	1999	1999	1999	1999	1999	1999	1999	1999
2.5	1990	1991	1992	1992	1993	1994	1995	1996	1997	1999
5.0	1984	1986	1988	1991	1993	1996	1999	2002	2004	2007
7.5	1979	1983	1987	1992	1997	2003	2008	2014	2019	2023
10.0	1976	1983	1991	1999	2007	2014	2022	2030	2038	2045
12.5	1966	1982	1995	2006	2017	2028	2038	2048	2057	2066
15.0	1942	1960	1981	2004	2025	2038	2051	2063	2074	2085
17.5	1914	1934	1957	1983	2012	2042	2059	2070	2082	2094
20.0	1882	1904	1928	1955	1984	2015	2050	2066	2076	2086
22.5	1847	1868	1890	1915	1944	1974	2008	2042	2048	2055
25.0	1781	1811	1842	1863	1887	1915	1944	1977	1996	1999
27.5	1705	1734	1764	1795	1817	1838	1861	1888	1922	1920
30.0	1624	1649	1675	1702	1729	1746	1764	1787	1818	1827
32.5	1539	1559	1580	1601	1622	1645	1660	1679	1699	1717
35.0	1437	1464	1479	1497	1513	1531	1553	1565	1581	1605
37.5	1316	1335	1371	1390	1400	1409	1436	1452	1459	1479
40.0	1186	1197	1228	1270	1275	1274	1298	1323	1317	1336
42.5	1051	1054	1081	1114	1128	1129	1138	1147	1147	1147
45.0	919.9	907.9	930.7	954.3	964.9	970.8	955.8	953.2	953.5	947.3
47.5	815.3	798.2	778.9	778.9	802.7	798.4	767.0	773.0	794.2	797.6
50.0	719.3	706.3	683.0	648.8	646.5	636.1	618.8	634.3	659.7	675.0
52.5	629.7	616.2	591.5	552.6	507.1	509.8	509.8	520.1	544.2	566.8
55.0	555.2	528.9	503.2	467.5	432.0	410.8	418.0	427.5	449.9	479.8
57.5	497.9	467.8	424.5	394.3	367.9	346.3	340.6	355.8	375.4	410.9
60.0	442.9	418.6	383.3	338.4	313.7	297.8	283.3	299.7	322.7	361.5
62.5	390.8	375.6	348.1	310.4	275.1	259.1	255.6	261.1	295.1	327.4
65.0	339.5	335.6	318.7	288.3	259.4	236.1	240.4	250.8	277.7	305.2
67.5	287.7	288.5	285.3	270.5	248.2	233.2	234.4	249.4	266.7	286.0
70.0	236.8	243.9	248.1	242.1	239.0	230.8	227.2	244.9	254.4	263.0
72.5	187.1	201.8	213.9	214.6	213.3	216.1	211.1	219.4	230.0	234.1
75.0	167.7	174.2	183.4	188.8	185.3	179.0	179.7	185.0	196.2	199.9
77.5	148.8	153.1	158.3	159.8	154.3	139.8	137.8	147.6	158.0	167.3
80.0	129.9	131.4	132.6	129.0	121.4	108.0	99.65	112.4	124.9	135.4
82.5	87.44	95.44	102.9	97.68	89.77	81.30	78.17	84.56	96.42	105.6
85.0	18.44	25.28	32.68	37.77	42.09	46.77	56.89	60.24	64.60	71.33
87.5	0	0	0	0	0	0	0	9.435	19.86	29.59
90.0	0	0	0	0	0	0	0	0	0	0
G/C	350.0	355.0								
0.0	1999	1999								
2.5	1999	2000								
5.0	2009	2011								
7.5	2027	2031								
10.0	2051	2057								
12.5	2075	2082								
15.0	2095	2105								
17.5	2105	2116								
20.0	2096	2108								
22.5	2065	2077								
25.0	2005	2018								
27.5	1923	1933								
30.0	1824	1831								
32.5	1712	1718								
35.0	1599	1602								
37.5	1483	1482								
40.0	1346	1333								
42.5	1150	1130								
45.0	957.8	942.2								
47.5	816.8	810.9								
50.0	700.9	707.1								
52.5	602.3	620.4								
55.0	516.0	542.1								
57.5	446.6	475.2								
60.0	394.0	419.7								
62.5	355.3	371.5								

C Range: 0 - 360DEG  
 C Interval: 5.0DEG  
 Test Speed: HIGH  
 Temperature: 25.3DEG  
 Operators:  
 Test Date:

γ Range: 0 - 90DEG  
 γ Interval: 0.5DEG  
 Test System: EVERFINE GO-2000B\_V1 SYSTEM V2.0.283  
 Humidity: 65.0%  
 Test Distance: 10.300m [K=1.0000]  
 Remarks:

Photometric Data Table [cd]

65.0	322.4	325.3
67.5	289.1	280.4
70.0	257.1	238.0
72.5	226.4	198.7
75.0	191.8	168.2
77.5	162.1	151.0
80.0	138.2	140.7
82.5	111.6	115.5
85.0	74.45	77.50
87.5	32.14	33.36
90.0	0	0

C Range: 0 - 360DEG  
 C Interval: 5.0DEG  
 Test Speed: HIGH  
 Temperature:25.3DEG  
 Operators:  
 Test Date:

γ Range: 0 - 90DEG  
 γ Interval: 0.5DEG  
 Test System:EVERFINE GO-2000B\_V1 SYSTEM V2.0.283  
 Humidity:65.0%  
 Test Distance:10.300m [K=1.0000]  
 Remarks: