



Model: CCT Zoom TrackLED 25 BK- 25W



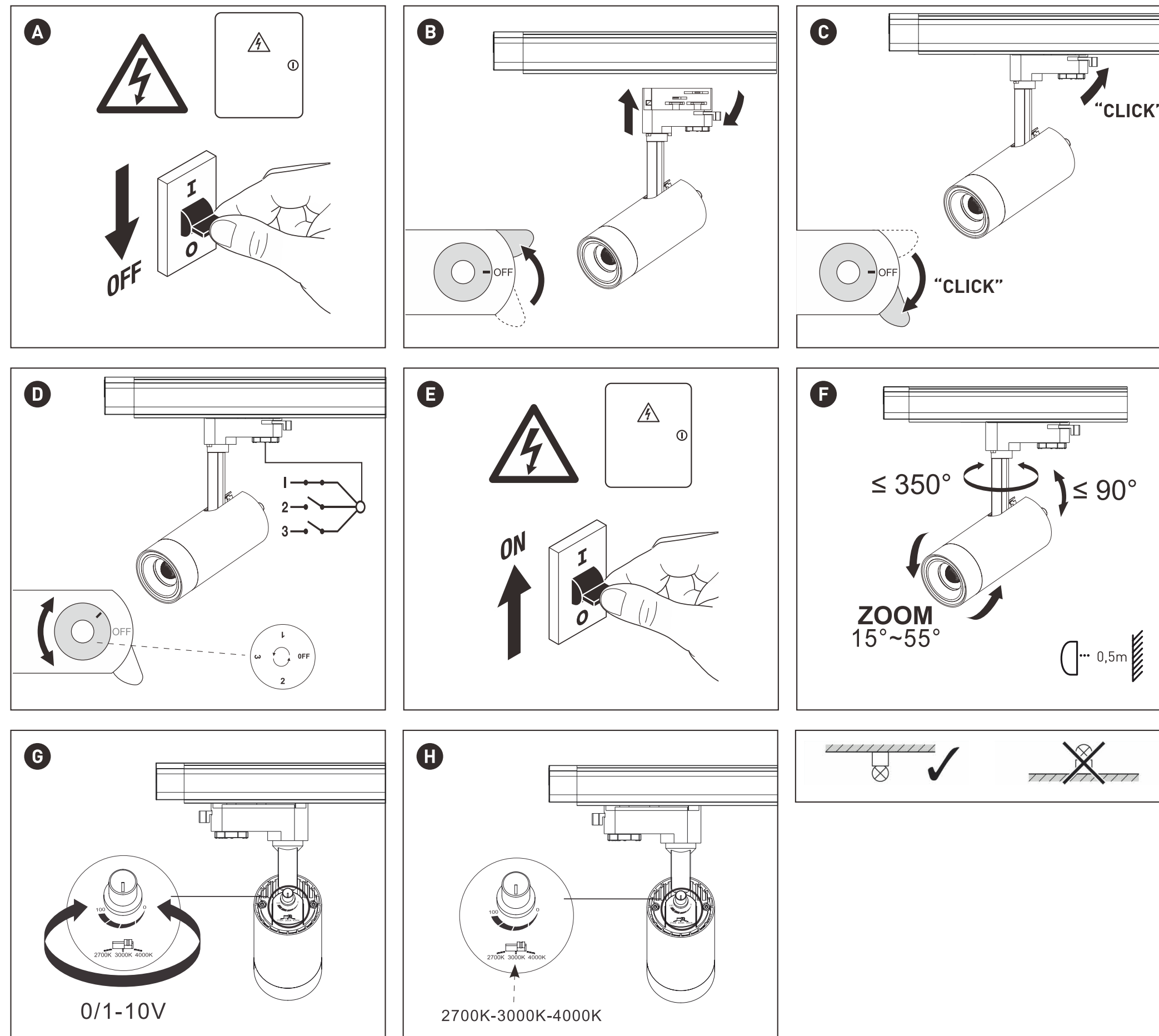
15W Version

	W	Real lm (2700K)	Real lm (3000K)	Real lm (4000K)	△	ØxH (mm.)	Kg
○ LC-0761847390654	15	955 (15°) 1080 (55°)	985 (15°) 1115 (55°)	1060 (15°) 1200 (55°)	15-55°	70x160	0,70

25W Version

	W	Real lm (2700K)	Real lm (3000K)	Real lm (4000K)	△	ØxH (mm.)	Kg
● LC-0761847390685	25	1800 (15°) 1955 (55°)	1860 (15°) 2025 (55°)	2000 (15°) 2175 (55°)	15-55°	85x165	1,00

INSTALACIÓN | INSTALLATION | INSTALLATION



SAFETY PRECAUTIONS

Use as directed

Product just for indoor use and lighting, and:

- Only be used in dry condition:
 - not in damp or dirt-endangered rooms.
 - not in areas of high air humidity.
- Not be exposed to strong mechanical loads or to strong contamination.
- Only be installed and operated after a condition inspection if the product is dirty or has been moistened through storage.
- Not be modified or converted.
- Do not hang or fasten anything on the product, especially no decoration.
- Never let children play unsupervised with electric products!

The light source of this luminaire is non-replaceable; When the light source reaches the end of its life, the entire luminaire must be replaced.

If these points named above are not adhered to, a short circuit or electrical shock may occur!

Installation

The complete installation must be done by an electrical expert or a specialized maintenance team, who is familiar with valid directives.

Attention: Switch off power of the mains supply or respectively of the connection lead before doing any works.

Use only parts, which are supplied with the product or are de-scribed as accessories! Otherwise the product or the installation might not be sufficiently safe!

Indication for the installer: In case you do not install a completely supplied system (with transformer), you are considered a "manufacturer" by the low-voltage directive. In this case you are required to ensure the conformity of the whole system and declare it by attaching the CE-sign.

Installation place

Make sure that the product is mounted on a stable, even and tilt-fixed background. Note the minimum distances in the ceiling.

Attention: Do not cover the product, especially not with insulating materials.

Operation - Information for the user

Operate the product only if it is working correctly. Switch off the product with a malfunction immediately and operate it again only after examination by an electrical specialist. This is the case, when:

- Visible damages appear.
- The product does not work.
- Smoke, steam or crackling sounds appear.
- An overheating is recognisable.

Repairs of the product or work on mains voltage-prominent sections may only be carried out by qualified electricians.

Attention: Exists mortal danger from an electric shock!

