



Mi • Light WIFI-Controller IBox

2.4GHz Gateway

Model No.: WL-Box1

Please read the instructions carefully before using the controller.

1. Features

Compatible with 2.4GHz RF products; and controlled by MiBoxer APP through WiFi or 4G network.



Can control 2.4GHz RF series product



16 Millions of colors to choose



WiFi Wireless Control



Color temperature 2700-6500K



2.4GHz RF transmission tech



Dimmable Saturation control



Smart phone App control



Timing ON/OFF the lights



Support Third Party Voice Control



2. Parameters

Model No.: WL-Box1

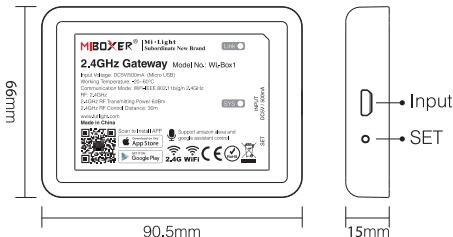
Input: DC5V/500mA (Micro USB)

Working Temperature: -20~60°C

Communication Mode: WiFi-IEEE 802.11b/g/n 2.4GHz

RF: 2.4GHz Transmitting Power: 6dBm

Product Weight: 23g



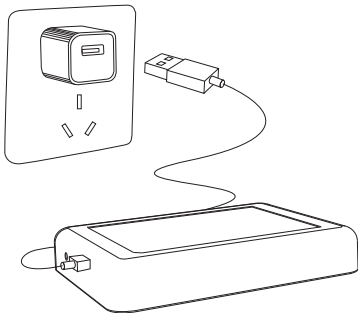
SET button

Long press "SET" 3 seconds to smart link mode,
SYS pilot lamp blinking.

Note: Factory setting is Smart Link mode by default.

3. Installation

Please install the device within 30m as lights, and approaching the WiFi Router.

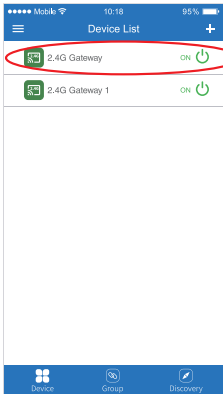


Pilot lamp illustrate:

Device status	SYS pilot lamp	Link pilot lamp
Smart link mode	Blinking	OFF
Networking successfully	OFF	ON
Received signal	OFF	Blinking
Disconnected from network	ON	ON
Device malfunction	Blinking	Blinking

4. User Instruction

1. Install MiBoxer APP. Click " + " add devices(See details on MiBoxer APP instructions).
2. Click "2.4G Gateway" on the device list to enter control interface.
3. Click "Change" to select compatible remote for the lights(Note: If you select wrong remote, you cannot control the lights).

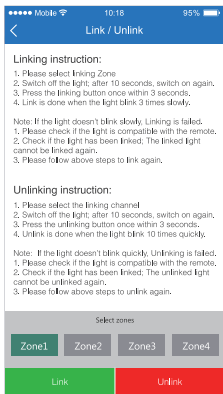


4. Click "Link/Unlink".
5. Link/Unlink method, See details on APP link/unlink instruction.
6. After linking successfully, back to the control interface to control the lights randomly.

Zone selection:

Click the "Zone" on the left bottom into the Zone selection.

Note: Please select the linked Zone, otherwise it cannot control the lamps.



Timer:

When the device get into Smart Link mode and re-configure, all the timers on this device will be deleted.

Attention

1. Before installation, please check the output voltage is in accordance with the device Rated Voltage.
2. The input voltage is DC5V/500mA, Please do not connect the power supply over DC5V, otherwise, the device will be broken easily.
3. Non-professional user cannot dismantle the device directly, otherwise, it may damage the device.
4. The working temperature is $-20\sim 60^{\circ}\text{C}$; Do not install the device to direct sunlight, moist and other high temperature area.
5. Please do not install the device around the mental area and high magnetic field, otherwise, it will badly affect the control distance.



www.futlight.com
Made in China



MiBoxer APP

User Instruction

1 APP Downloading

For IOS System: Pls search "MiBoxer" on APP store.

(Above IOS9.0)

For Android System: search "MiBoxer" on Google Play

(Above Android 5.0) or Scan below QR-code to download APP.



Scan QR Code to Install APP



Download on the
App Store



GET IT ON
Google Play

2 Register MiBoxer Account

Open APP and click Register button; Complete the register and log in.

Mobile 10:18 95%

MIBOXER®
MI • Light Subordinate New Brand

United Kingdom +44 >

Mobile number / Email address

Password

I agree [Service Agreement](#) and [Privacy Policy](#)

Log in

Register

Authentication code login Forgot Password

3 Add Device

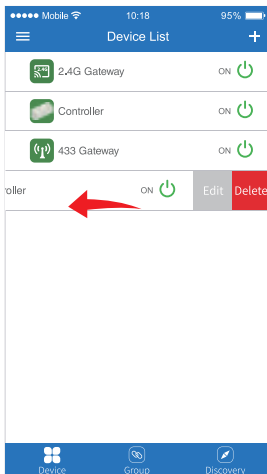
1. Click the right top "+" on the device list.
2. Please select the device type you will add, then complete the adding according to the hint of APP.
3. Back to device list after adding successfully, then pull down refresh in list to get the device status.



4 Modify device name or delete device

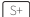
Slide device list to left, click " **Edit** " to modify device name; click " **Delete** " to delete device.

Note: If the device was shared to others, then the device will also be deleted on your friends' device list.



5 APP Control

Click the device that you want to dim on device list into dimming Interface.

 Click speed+ under dynamic mode.

 Click speed- under dynamic mode.



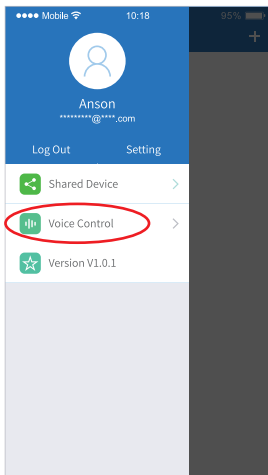
6 Third Party Voice Control instructions

Search "Mi-Light Smart" on third-party platform APP and set up.

Click left top "☰" icon on the home page;

Then click "🔊 Voice Control" to check detailed instructions.

Note: The third party voice just control the lamps linked on selected remote. (Not support Zone control)



7 Sharing Device

Share the device to friends, Let your friends can control this device.

1. Click the left top "☰" icon on the home page.
2. Click "🔙 Shared Device" to My sharing, then click "**Add sharing**" (Note: the receiving sharing device cannot be shared again).
3. Click "👤 Jack jack@milight.com" to edit sharing, slide to left to delete sharing.

